



SC 75M-HC High-Cycle Industrial Shock Absorber Cycle Faster - Gain Production Time



Shock Absorbers Shown
Actual Size

Advantages...

*Designed for High-Speed
Automation Equipment*

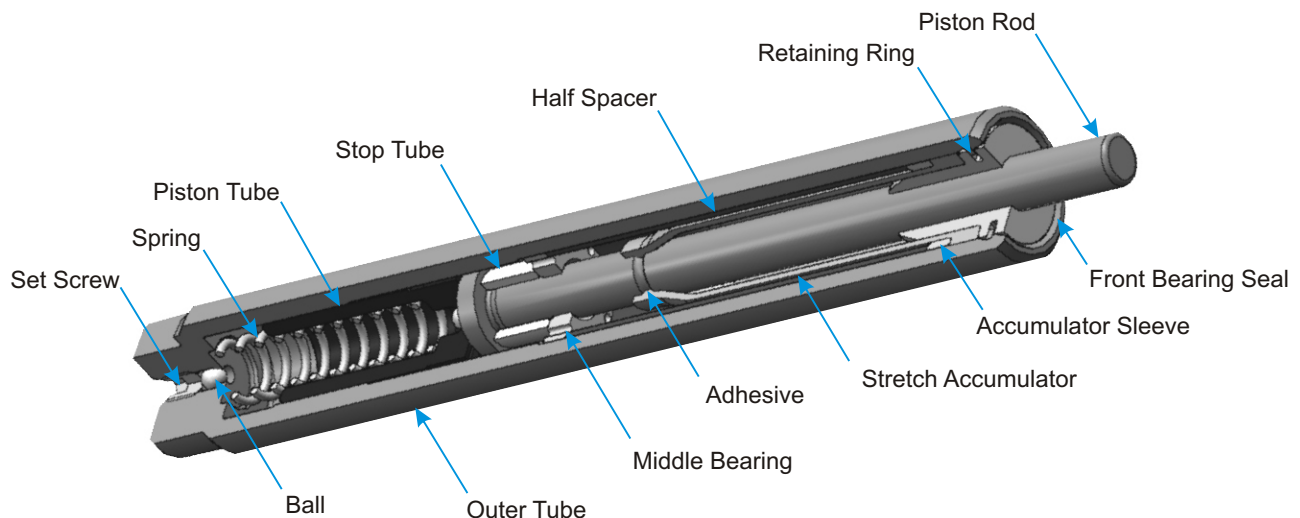
Quick Time Through Stroke

*Capable of Rapid Repeat
Strokes*

Quick Rod-Ready Time

The new ACE Controls SC 75M-HC High-Cycle miniature industrial shock absorber is ideal for high-speed applications. The short stroke and quick rod-ready time translate to faster cycling for your equipment.

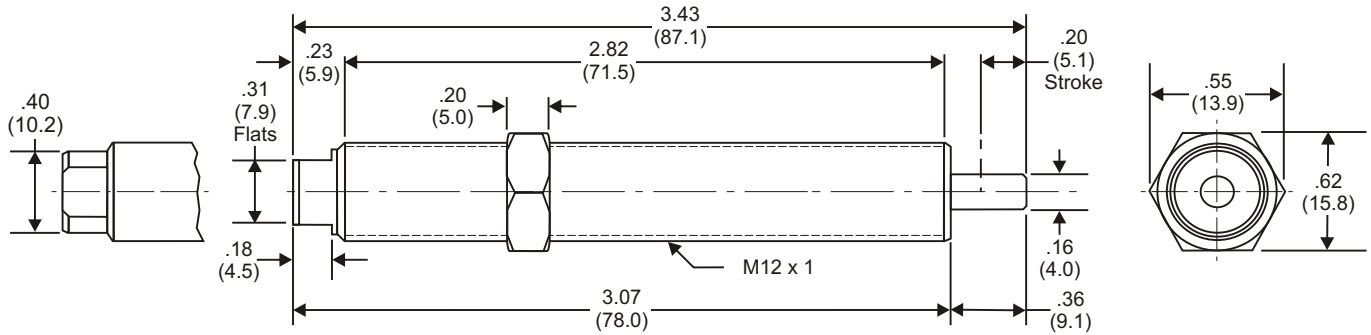
Applications include: packaging equipment, slides, rotary actuators, small and medium robotics, machine tools, pick & place operations and more.



ACE Controls Inc.

World leader in deceleration technology
ISO 9001:2000 Certified

Dimensions in inches (millimeters)



Specifications

Model	We Effective Weight lbs (kg)	E ₃ Energy per Cycle in lbs (Nm)	E ₄ Energy per Hour in lbs/hour (Nm/hour)	Return Force lbs (N)	Return Time sec	Shipping Weight lbs (kg)
SC 75M5-HC	2.2 - 18 (1 - 8)	75	226,000	1.94 - 3.4	0.30	.10
SC 75M6-HC	15 - 172 (7 - 78)	(8.5)	(24,100)	(8.6 - 15.1)		(.04)
SC 75M7-HC	165 - 1,760 (75 - 798)					

Technical Data

Impact velocity range:

SC 75M5-HC: 1.49 to 13.52 ft/sec (0.46 to 4.12 m/sec)

SC 75M6-HC: 0.48 to 5.18 ft/sec (0.15 to 1.58 m/sec)

SC 75M7-HC: 0.15 to 1.56 ft/sec (0.05 to 0.48 m/sec)

Operating temperature: 32° to 150°F (0° to 66°C)

Mechanical stop: Integral mechanical stop built into shock absorber.

Oil Type: SF 96-500

Materials: Steel body with black oxide finish. Hardened stainless steel piston rod.

Maximum side load depends on application. For additional information contact ACE Controls' Applications Department.

Lock nut torque specifications: 44 - 48 in lbs (5.0 - 5.4 Nm)
Lock nut included with each shock absorber.

Ordering Information

