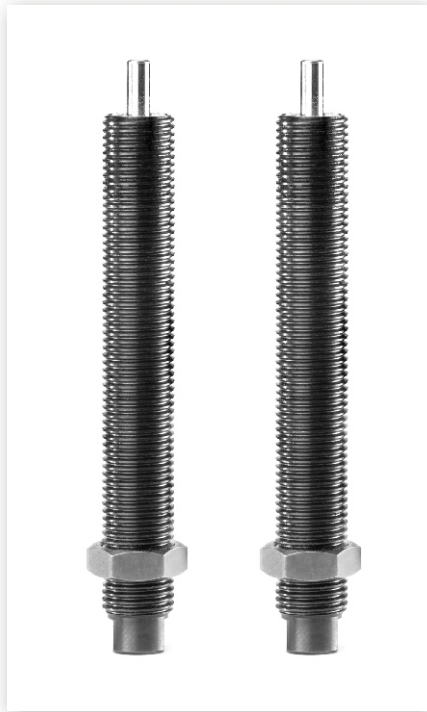




SC 25M-HC High-Cycle Industrial Shock Absorber Cycle Faster - Gain Production Time



Shock Absorbers Shown
Actual Size

Advantages...

*Designed for High-Speed
Automation Equipment*

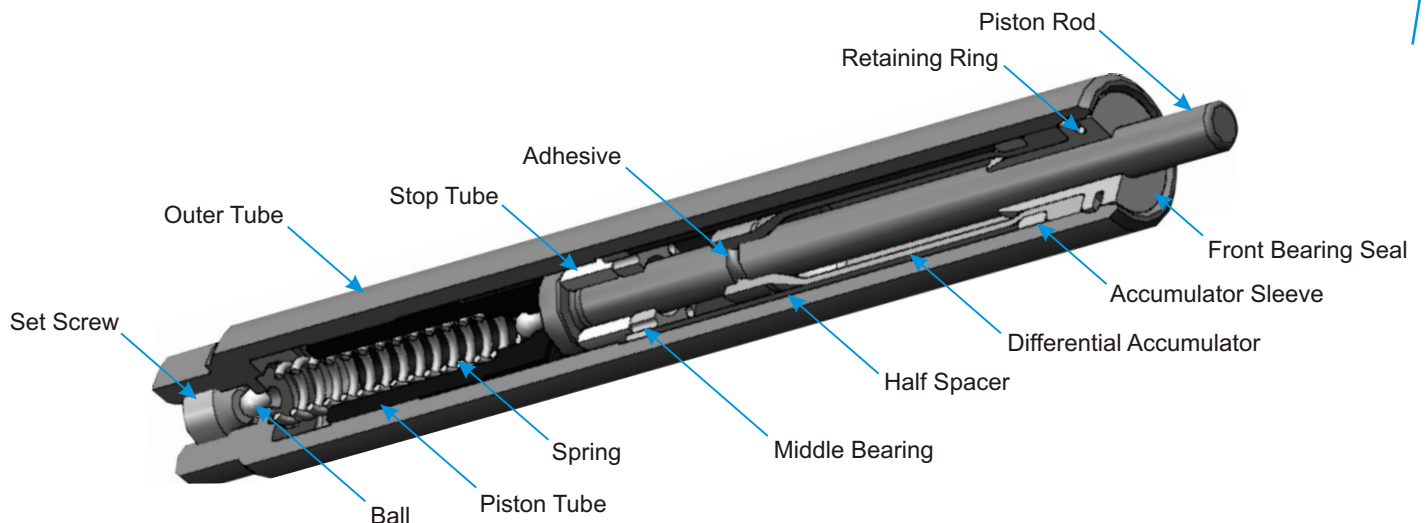
Quick Time Through Stroke

*Capable of Rapid Repeat
Strokes*

Quick Rod-Ready Time

The new ACE Controls SC 25M-HC High-Cycle industrial shock absorbers are ideal for high-speed applications. The short stroke and quick rod-ready time translate to faster cycling for your equipment.

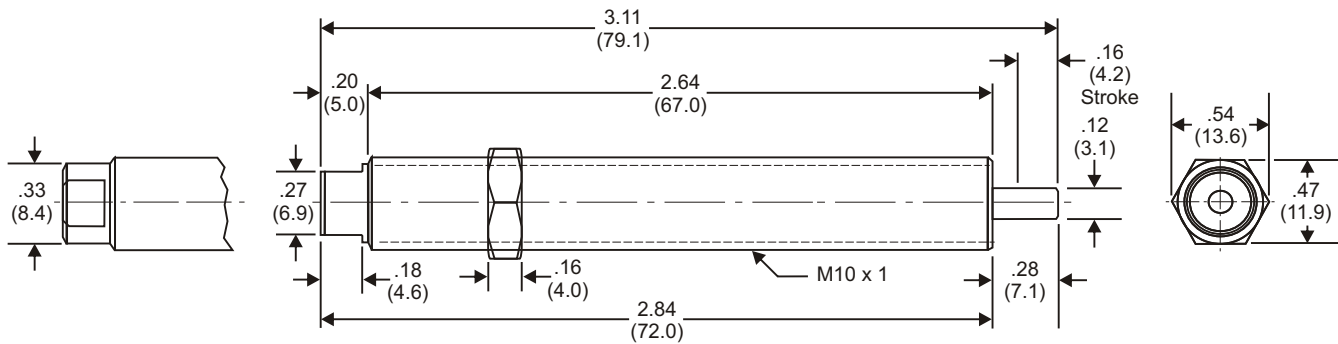
Applications include: packaging equipment, slides, rotary actuators, small and medium robotics, machine tools, pick & place operations and more.



ACE Controls Inc.

World leader in deceleration technology
ISO 9001:2000 Certified

Dimensions in inches (millimeters)



Specifications

| Model | We Effective Weight lbs (kg) | E ₃ Energy per Cycle in lbs (Nm) | E ₄ Energy per Hour in lbs/hour (Nm/hour) | Return Force lbs (N) | Return Time sec | Shipping Weight lbs (kg) |
|------------|---------------------------------------|--|--|----------------------------|-----------------------|--------------------------------|
| SC 25M5-HC | 2.2 - 11 (1 - 5) | 20 | 142,000 | 1.98 - 3.08 | .2 | 0.06 |
| SC 25M6-HC | 9 - 97 (4 - 44) | (2) | (14,200) | (8.80 - 13.70) | | (0.03) |
| SC 25M7-HC | 93 - 1,100 (42 - 499) | | | | | |

Technical Data

Impact velocity range:

SC 25M5-HC: 0.99 to 6.98 ft/sec (0.30 to 2.13 m/sec)

SC 25M6-HC: 0.33 to 3.45 ft/sec (0.10 to 1.05 m/sec)

SC 25M7-HC: 0.10 to 1.07 ft/sec (0.03 to 0.33 m/sec)

Operating temperature: 32° to 150°F (0° to 66°C)

Mechanical stop: Integral mechanical stop built into shock absorber.

Oil Type: SF 96-500

Materials: Steel body with black oxide finish. Hardened stainless steel piston rod.

Maximum side load depends on application. For additional information contact ACE Controls' Applications Department.

Lock nut torque specifications: 35 - 38 in-lbs (4.0 - 4.3 Nm)

Lock nut included with each shock absorber.

Ordering Information

