



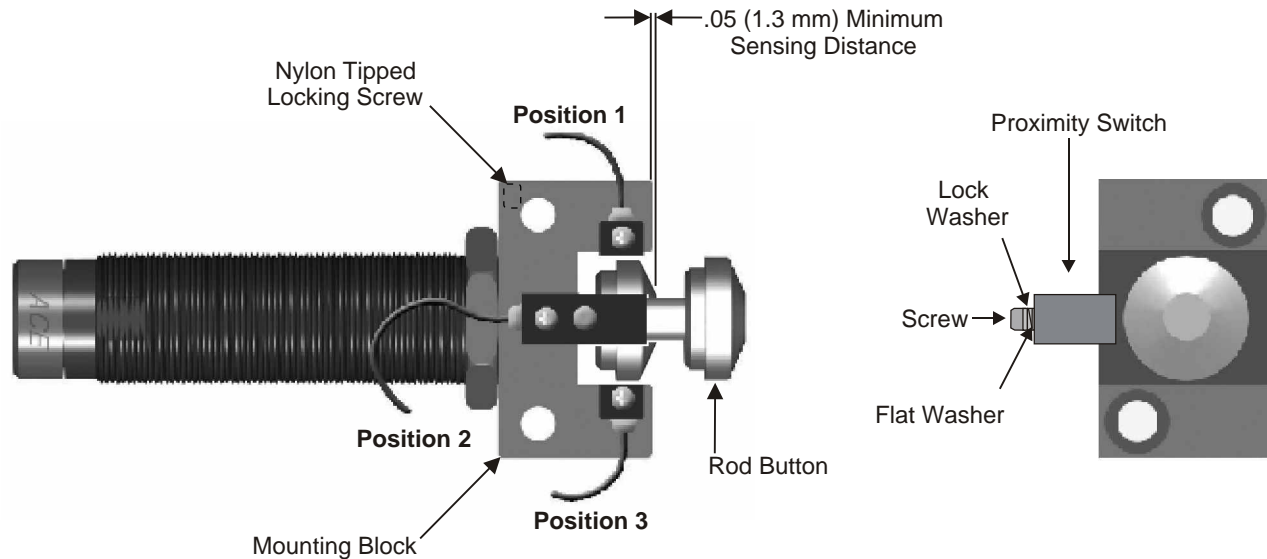
23435 Industrial Park Drive
Farmington Hills, Michigan 48335
tel: **248.476.0213**
fax: **248.476.2470**

www.acecontrols.com

Installation Instructions

StopLight™ Proximity Switches For Use With . . .

MA 150, 225, 600 & 900 MC 150, 225 & 600
SC 190, 300, 650 & 925 MVC 225, 600 & 900



Installation Instructions: Dimensions in inches (metric)

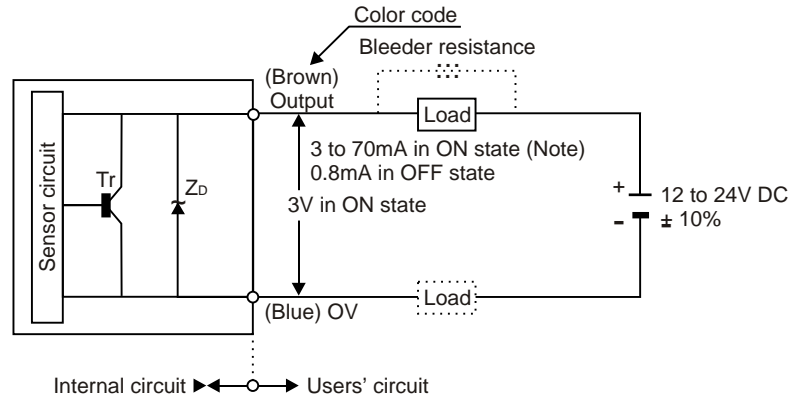
1. Install the rod button onto the shock absorber by pressing with hand force.
2. Screw the shock absorber into the mounting block and position according to the shock absorber installation instructions. Use the front of the mounting block as a positive stop.
3. Tighten down the nylon tipped locking screw, in the side of the mounting block with a 5/64 (2 mm) hex key. Tighten to 2.5 - 3.0 in lbs. (.28 - .34 Nm).
4. Position the proximity switch on the mounting block in any of the three positions and holding the switch against the cut out surface, tighten the screw to 2.5 - 3.0 in lbs. (.28 - .34 Nm).
5. An additional washer is shipped with the MC 225M mounting block. It must be added to the screw and washer assembly if position 2 is selected.
6. Make sure the wiring is done according to the diagram, before connecting the power.
7. Connect the ends of the wire as close as possible to the switch.
8. Do not install the lead wires parallel to an electrical or power line.

ACE Controls Inc.

World leader in deceleration technology
ISO 9001:2000 Certified

StopLight™ Proximity Switch

DC 2-Wire Type I/O Circuit Diagram



Specifications

Detecting Distance 2.5 mm ± 15% (with standard target)

Setting Distance 0 to 1.9 mm (with standard target)

Standard Target Iron: 15 x 15 x 1 mm

Differential Travel 10% max of detecting distance

Supply Voltage 12 to 24 V DC, ripple (P-P) 10% max

Current Consumption 3 - 70 mA (at 24 V DC with no load)

Response Frequency 1 KHz min.

Control Output
Max load current: 50 mA
Switching capacity: 30 V DC max
Residual voltage: 3.0 V max

Ambient Temperature
Operating: -25° to 70° C
Storage: -40° to 85° C

Humidity
Operating: 45% to 80%
Storage: 35% to 95%

ACE Controls Inc.

World leader in deceleration technology
ISO 9001:2000 Certified

ACE Form 14, Proximity Switch
04/01/2004